

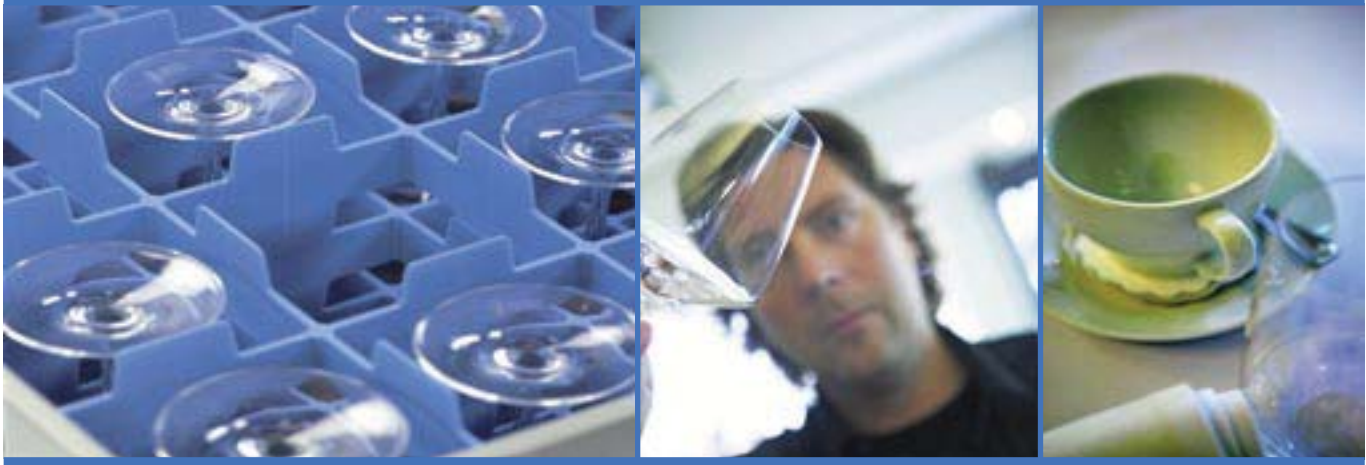
Hood Type Dishwasher

■ WD-7



Wexiödisk 

■ Our history – clean dishes



Wexiödisk was founded in 1972

The three founder members, with experience from production and development of catering equipment, saw a possibility to supply a range of dishwashers within reach for distributors outside the large established organisations. Through knowledge, foresight and also an ambition to offer something really good a range of quality machines was created. The extraordinary high quality and new innovations gave quick selling success even outside Sweden.

Our quality

Our ambition from the start has been that all our customers are satisfied. Therefore we focus on being able to offer operation safety, low operation costs and also a good working environment rather than focusing on low price. In other words an early focus on Life Cycle Cost. Excellent dishwashing result goes without saying.

Our partners

We have carefully chosen our partners who distribute, sell and service our products. Together, through a close dialogue, good product support system and training, we fulfil our customers expectations. Today Wexiödisk is the leading supplier in Scandinavia, with not only a distribution network in Europe but also for example in Japan and Australia. During later years Wexiödisk have even had prestigious projects in the inflight catering sector, a customer group with very high demands.

Our products

We will continue our focus on product development, to keep and improve customer satisfaction by having a competitive and technically advanced product range. To realize it, we use latest technology together with skilled and competent employees. A complete production set up, from raw materials to final product test, equipped with automated machines and robots secure quality and accessibility.

Our environmental focus

Dishwashers use large amounts of energy, water and chemicals. Therefore in more recent years Wexiödisk have focused even more on the environmental aspect, which has led to the development of new unique products. ICS+ and DUPLUS are two of the new patented techniques that reduce the environmental impact. This also reflects in a considerable lower operation cost.

Everyday facts

Wexiödisk is situated in Växjö in South Sweden. The plant is about 11000 m². Number of employees about 175.

Our ambition

Every installation should be a good reference.



WD-7 Hood Type Dishwasher

- **Combi-dishwasher** with large dishwashing area, feed clearance height of 500 mm and internal width of 610 mm. The dishwasher can be set for normal and heavily soiled loads.
- **Unique hood** – the steam rises behind the machine when the hood is opened.
- **Optimum wash results** through self-draining wash arms.
- **Hygienic** – the machine meets the strictest hygiene requirements through the automatic control of final rinse temperature and water quantity.
- **Ergonomic and efficient** due to the hood opening automatically once the wash program has finished. (EH model)
- **Service-friendly** – service is normally carried out from the front of the machine.

The drying conveyor and basin conveyor are not part of the range.



WD-7 – a first class combi-dishwasher with large dish-washing area and long service life

The WD-7 is a traditional hood dishwasher with a unique hood concept and adjustable rinse pressure as two of several innovative solutions. The machine can be reset quickly and easily to wash heavily soiled loads.

The Wexiödisk WD-7 is ideal for demanding environments. The feed clearance height is 500 mm and the internal width is 610 mm, which makes it possible to clean items such as baking trays, bread baskets, large bowls and GN canteens, etc.

A good working environment, high levels of hygiene, easy servicing and optimum wash results make the WD-7 one of the best dishwashers on the market in its segment.

The WD-7E with manual hood lift and the WD-7EH with automatic hood lift are electronically-controlled machines, each with three wash programs. Each machine has a series of technical features which improve the working environment of users, e.g. the hood tilting forwards as it opens. The steam then rises upwards behind the machine and not into the user's face.

Designed for strict hygiene requirements and excellent washing results

The washer arms are emptied of washing water before the final rinse starts, in order to give the best possible wash results and high levels of hygiene. When the wash program finishes, the load can be removed from the dishwasher without any remaining washing water dripping on to the clean dishes and plates. Efficient filters allow for long wash cycles without the water being changed.

The wash programs' washing and rinsing times can be adjusted to suit requirements. The control system monitors all functions, e.g. water quantity and final rinse temperature. The remaining washing time can be seen in the control panel display. The electronic function alerts you if the washing temperature is too low. This reduces the risk of foam forming and poorer washing results. An automatic cleaning programme makes it easier to clean the inside of the machine.

Ergonomic and efficient - large capacity

The automatic hood is the main difference between the WD-7E and the WD-7EH. On the WD-7EH the hood opens automatically when the wash program is finished. The hood lifts up a few centimetres and then stops to allow the hot steam to rise up behind the machine before the hood lifts up to its highest position. The load starts to dry immediately and the basket can be removed from the machine. The next basket can be put in. With the press of a button the hood is closed and the program restarts. The automatic hood improves the ergonomics for the user and the washing is more efficient.

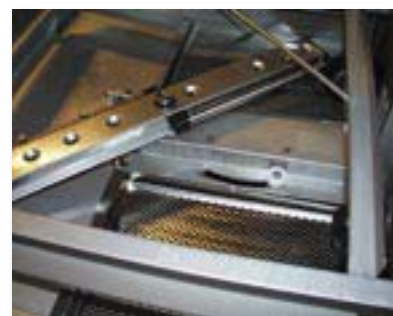
The basic WD-7E/EH design has a washing capacity of 50 baskets per hour. The machines have a built-in basket counter which displays how many baskets have been washed during the day and also the total number of baskets washed.

Service-friendly

All WD-7 models are very easy to service. To make service easier, most of the components are easily accessible and service can normally be carried out from the front of the machine.



The control panel on the electronic machines displays important information such as program selected, remaining washing time, temperatures, alarms, number of baskets washed etc. In addition to displaying the standard program selection of P1-P3, the displays also show when the cleaning program and pause mode (program P0) have been activated.



The unique washing system, with the option of choosing between normal and heavily soiled loads, increases the machine's range of applications. The WD-7 can be used in most installations where loads are usually mixed and have high capacity requirements.

Wexiödisk 

Technical data

Technical data	WD-7E	WD-7EH
Wash pump (kW)	1,1	1,1
Booster heater (kW)	9/12*	9/12*
Heater tank (kW)	1,8	1,8
Tank volume (litres)	53	53
Weight, machine in operation (kg)	170	175
Degree of protection (IP)	45	45

* Optional equipment

Capacity and operation data	WD-7E	WD-7EH
Total time/wash program 1 (min)	1,2**	1,2**
Total time/wash program 2 (min)	1,7**	1,7**
Total time/wash program 3 (min)	3,2**	3,2**
Capacity, max. (baskets/h)	50	50
Water consumption, rinse / program (litres)	4	4
Energy consumption (kWh of connected power)	70-90%	70-90%
Sound level * (dB(A))	63/65	63/65

* Measured 1 metre from the machine

** Factory setting. The wash time is adjustable.

Connection, machine	WD-7E	WD-7EH
Total connected power (kW)	10,1/13,1*	10,1/13,1*
Main fuse 400V 3N~ (A) **	16/20*	16/20*
Max. conn.area 400V 3N~ (L1-L3,N,PE) Cu (mm ²)	6	6

* Optional equipment

** Other voltages on request

Connection water, drain and ventilation	WD-7E	WD-7EH
Water quality, hardness (°dH)	2 - 7	2 - 7
Hot water connection 50 - 70°C (external thread)	R ½"	R ½"
Cold water connection 5 - 12°C * (external thread)	R ½"	R ½"
Drain connection, PP pipe (ø mm)	50	50
Water capacity hot water, pressure (kPa) **	300	300
Water capacity hot water, flow (litres/min)	18	18
Water capacity cold water, hood lift, pressure (kPa) **	-	300
Water capacity cold water, hood lift, flow (litres/min)	-	2
Floor drain, capacity (litres/sec)	3	3
Ventilation of the machine (m ³ /h)	600	600

* With 12 kW booster heater and for the hood lift on the WD-6EA.

** With lower pressure the machine should be fitted with booster pump

Size and weight for transportation	WD-7E	WD-7EH
Size, LxWxH (mm) *	765x805x1650	765x805x1650
Weight (kg) *	125	130

* Packaging included

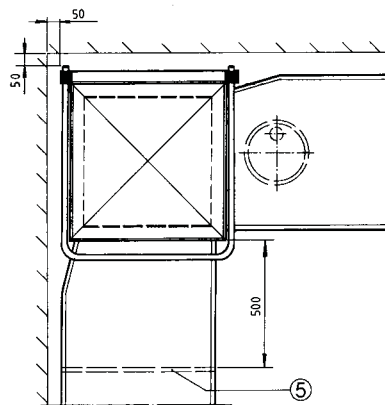
Article numbers - Extra equipment

Machine model	Art. no.	Dimensions in mm LxWxH	Booster heater	Electrical connection
WD-7E	2-0704	765x805x1650	9 kW	400V 3N~ 50Hz 10,1 kW 16A
WD-7EH	2-0705	600x628x850	9 kW	400V 3N~ 50Hz 10,1 kW 16A
Extra equipment	Art.no.			
Connection pipe with re-suction protection (WD-7E)	2-0657			
Connection pipe with re-suction protection (WD-7EH)	2-0658			
Steam hood with suction connection ø 160 mm	2-0760			
Automatics for suction fan (1-phase closing contact)	2-0760A			
Detergent dosing for liquid detergent	2-0662			
Booster pump WD-7E	2-0651E			
Booster pump WD-7EH	2-0651EA			
Booster heater 12 kW only for cold water connection	2-0653E		12kW	400V 3N~ 50Hz 13,1 kW 20A
Emptying pump WD-7E	2-0665E			
Emptying pump WD-7EH	2-0755			

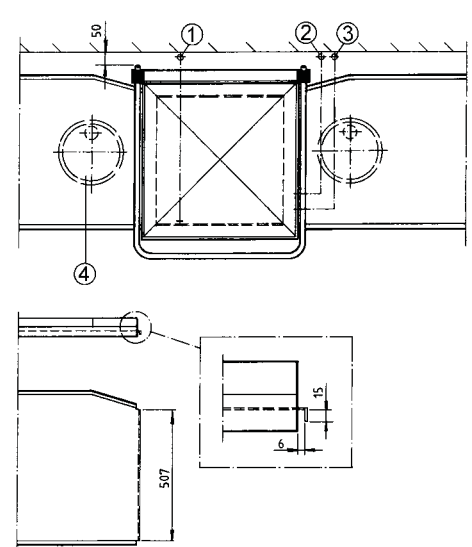
Connection

1. Electrical connection
2. Cold water connection for hood lift (WD-7EA)
3. Hot water connection
4. Floor drain, 3 l/sec. capacity
5. Legs. Placed min. 500 mm in front of the machine.

Corner feed

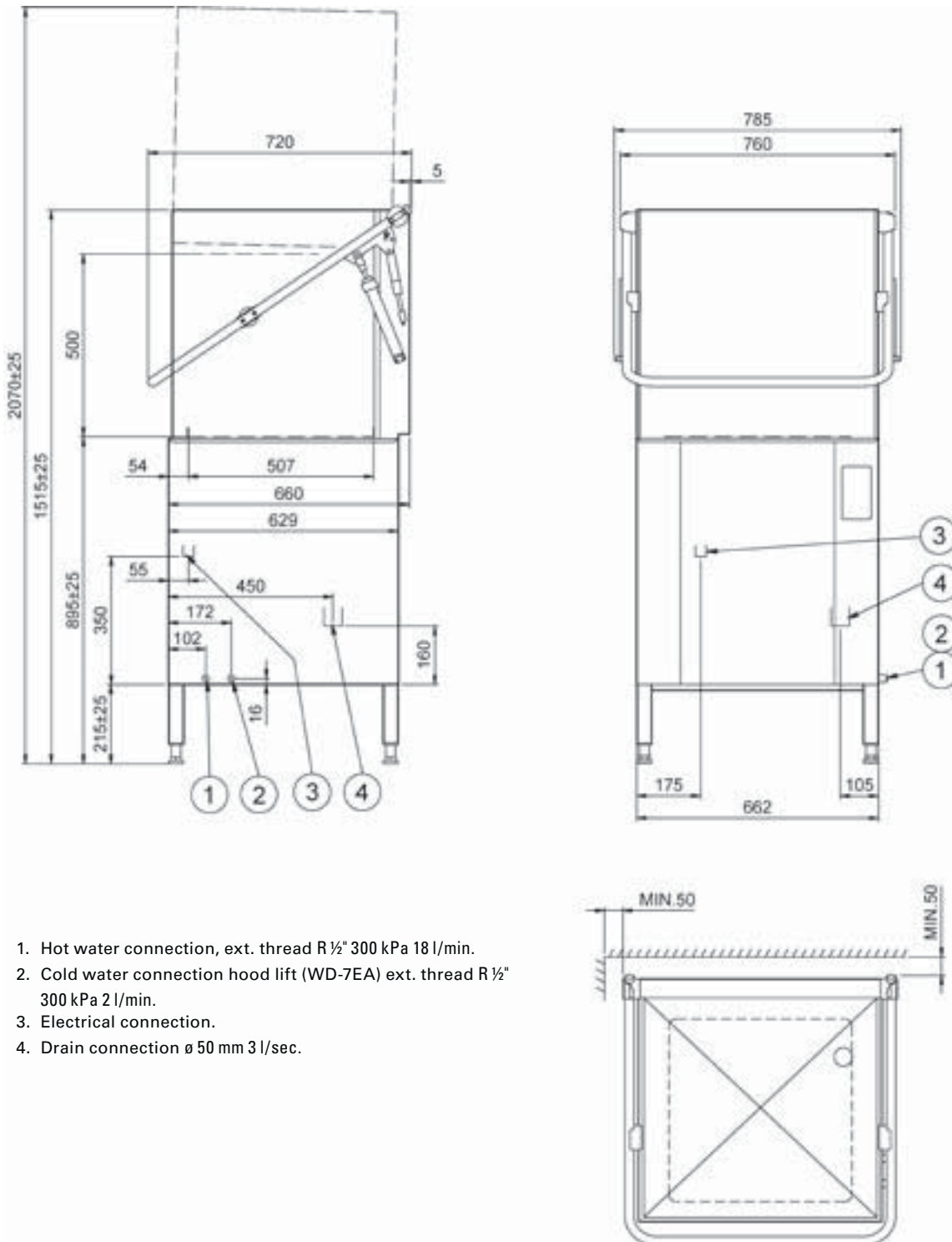


Straight feed



Sink connection

Dimensional drawings



1. Hot water connection, ext. thread R ½" 300 kPa 18 l/min.
2. Cold water connection hood lift (WD-7EA) ext. thread R ½" 300 kPa 2 l/min.
3. Electrical connection.
4. Drain connection ø 50 mm 3 l/sec.



BECAUSE WE DO CARE



Aishwarya Consolidates Pvt. Ltd.,
#19, Frist Floor, 10th 'B' Main, 27th Cross,
Third Block Jayanagar, BANGALORE – 560 011, INDIA
Tel: +91-80-2664 1200/1/2 Fax: +91-80-2664 1204
E-mail : aishtek@vsnl.com www.aishwaryaconsolidates.com